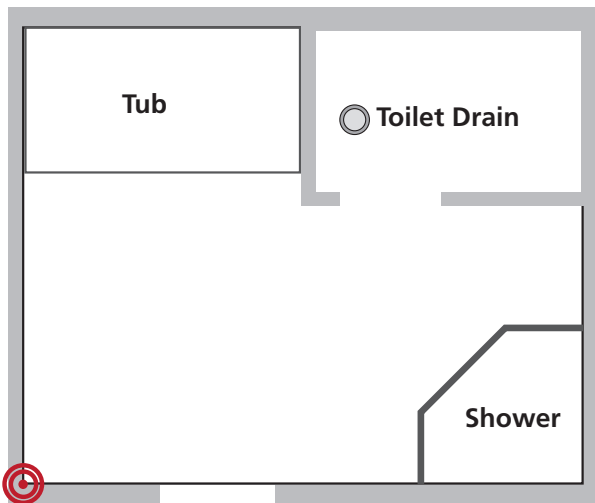


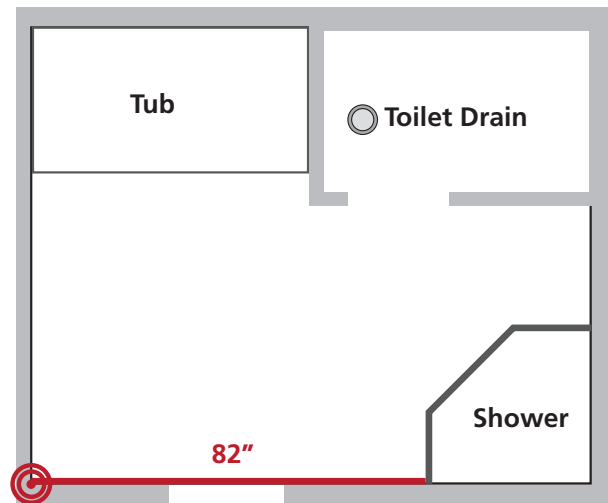
How to Measure and Submit Project Drawings for Peel & Heat Complete Quotes and Installations

NOTE: Please do not submit project blueprints or architectural plans.

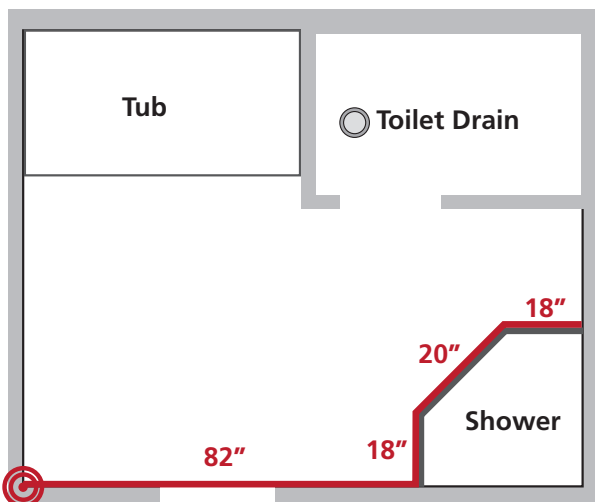
1. Pick a corner of the room and use that as a starting point for your measurements. Remember that you must return to this starting point at the end of your measurements.



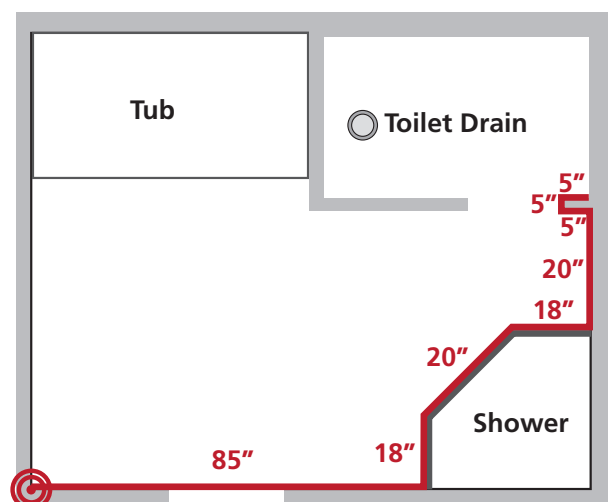
2. Measure and draw the walls of the room on grid paper and record the measurements.



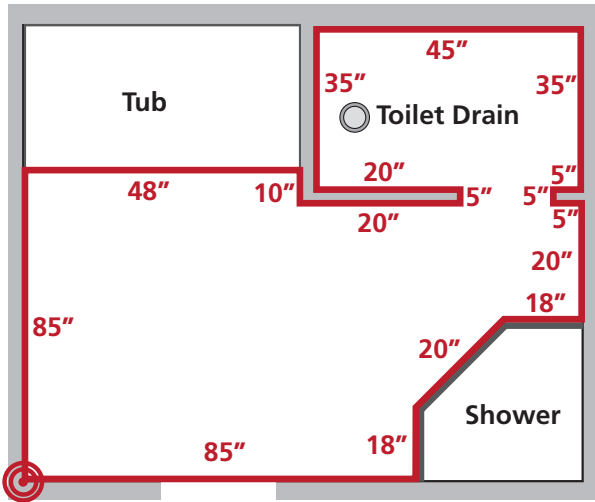
3. Each time the wall changes direction, record the measurement before continuing to measure the next wall. Measure around fixtures where Peel & Heat Complete would not be installed under such as shower bases and tubs.



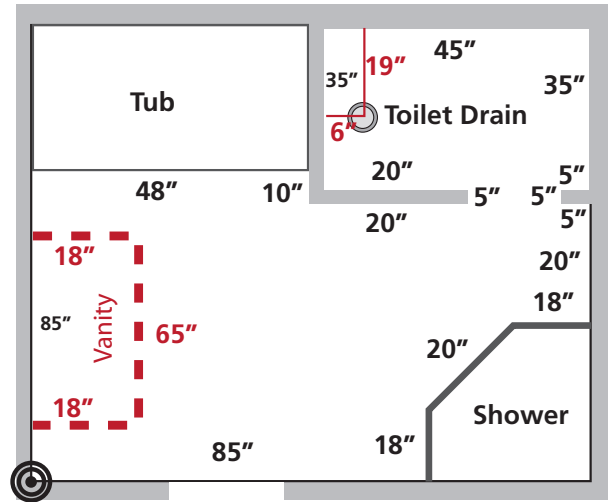
4. Be sure to include any small dimensions such as framing walls for entryways into smaller rooms.



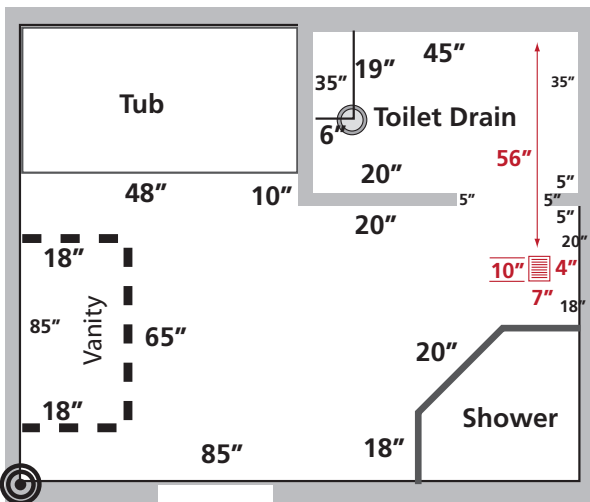
5. Measure and draw the room on the grid paper and record the measurements until you reach the starting point identified in step 1.



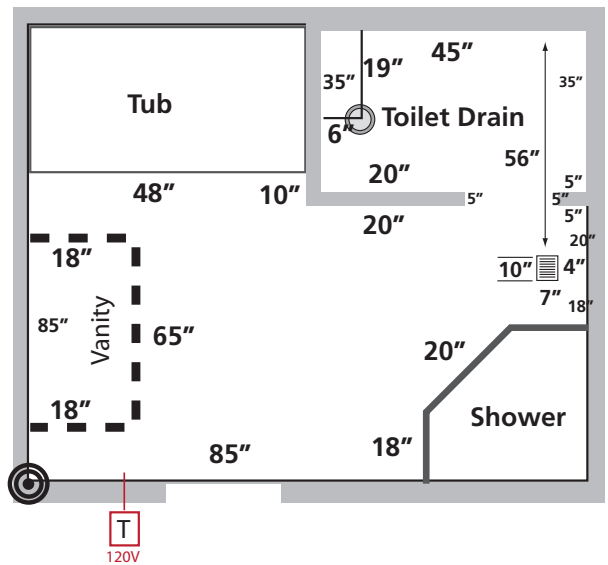
6. Measure and draw the location of vanities, cabinets and toilet drains.



7. Include all vents and other fixed floor features.



8. Indicate Thermostat location and voltage.



NOTE: Please do not submit project blueprints or architectural plans.



History of Air Force Academy in Okla



Custom Mat Measuring Instructions

Step 1 – Drawing Preparations

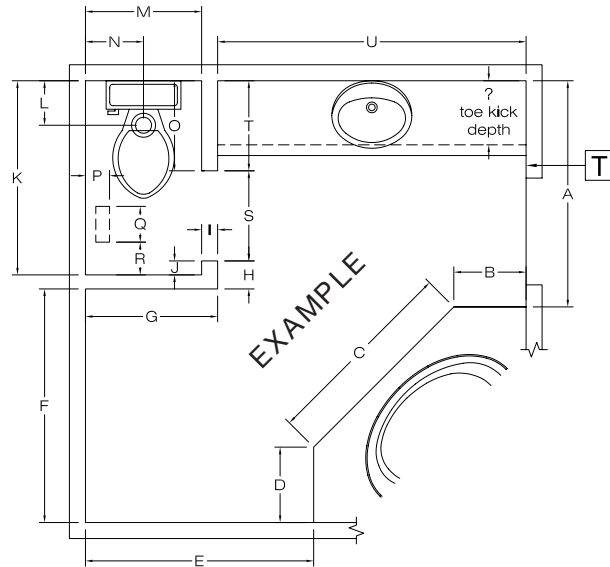
- Sketch the shape of the room
Protecto Wrap drawing paper is available on our website if required
- Locate toilet, vanities, vents, floor drains, etc. (where applicable)
- Please indicate the proposed thermostat location with a “T”

Step 2 – Field Measuring

- Using your thermostat location as a starting point, begin measuring the complete inside perimeter of the room at floor level, finishing at the starting point
- For toilet rooms, dimensions for letters H, I, J, K, M, O, S & T in sample drawing are required to plan for the heating mats coming through the door opening
- For vents, dimensions for letters P, Q & R in sample drawing are required (where applicable)

Checklist

- Thermostat location
- Voltage: • 120V • 240V
- Floor vent locations identified
- Obstructions shown - toilet, cabinets, plumbing, partial walls, etc.
- Special instructions noted (i.e. heat not required, etc.)



Please do not hesitate to contact your Protecto Wrap retailer or distributor for assistance at 1-800-759-9727 or visit us on the web at www.peelandheatcomplete.com